



MONTHLY MEMBERSHIP PROGRESS REPORT

District 21 B

Results as of: 05/31/2018

GMT: WILLIAM PHILLIPI

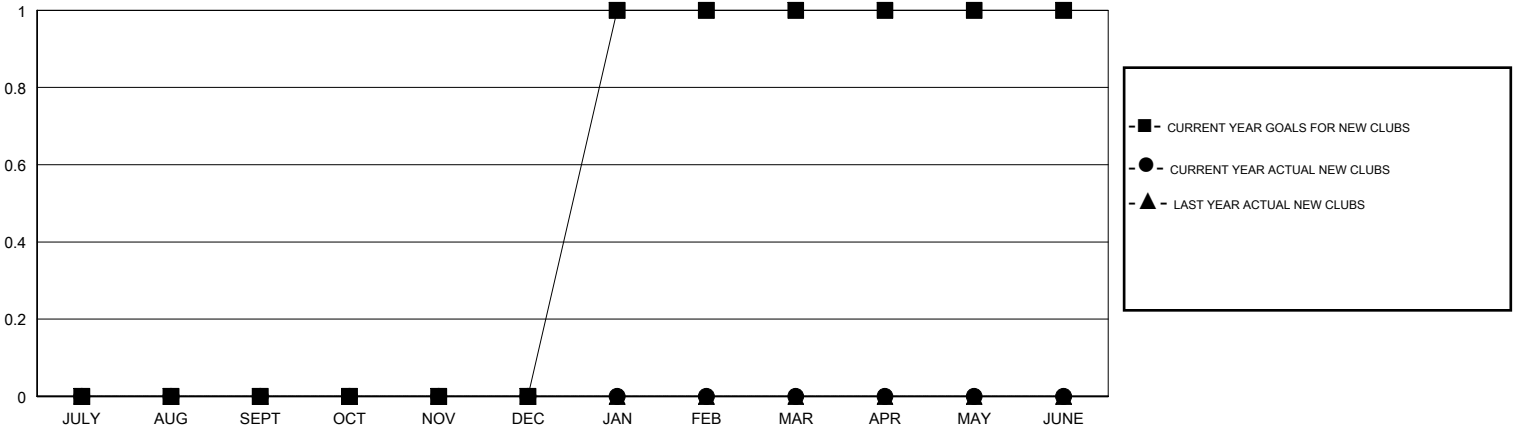
LOCATION ARIZONA

GMT CA

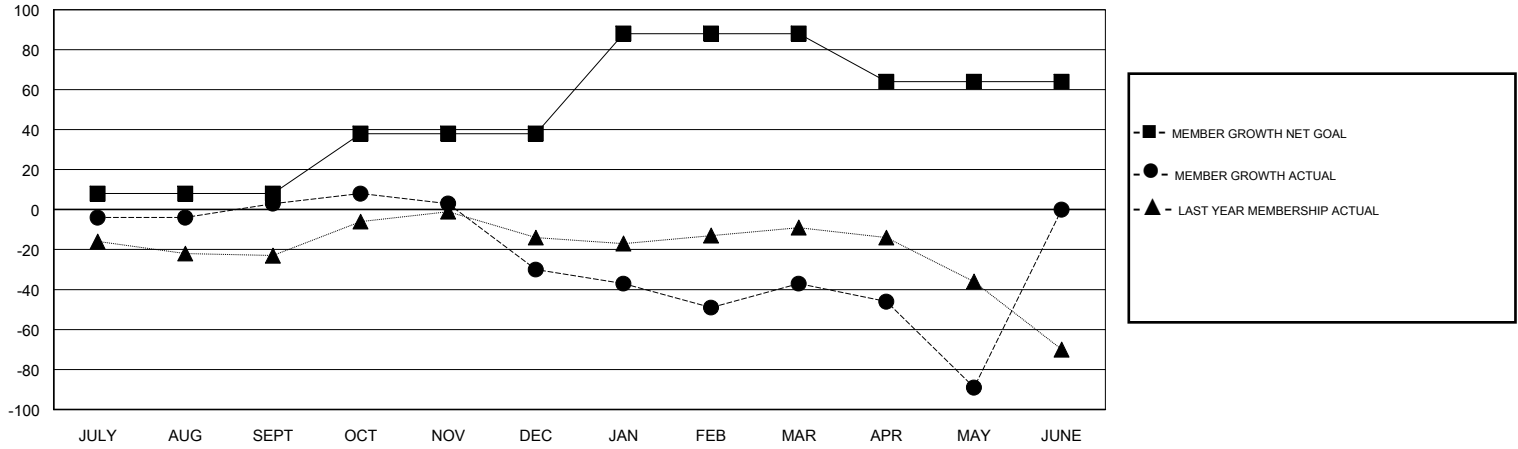
Clubs			
RESULTS FOR 2017-2018			
QUARTER	NEW CLUB GOAL	NEW CLUBS	DROPPED CLUBS
JULY/AUG/SEPT	0	0	0
OCT/NOV/DEC	0	0	1
JAN/FEB/MAR	1	0	0
APR/MAY/JUNE	0	0	0

Members			
RESULTS FOR 2017-2018			
QUARTER	MEMBER GROWTH NET GOAL	MEMBER GROWTH ACTUAL	DROPPED MEMBERS ACTUAL (including transfers)
JULY/AUG/SEPT	8	49	37
OCT/NOV/DEC	30	49	75
JAN/FEB/MAR	50	41	37
APR/MAY/JUNE	-24	41	67

GOALS AND ACTUAL NEW CLUBS CUMULATIVE



GOALS AND ACTUAL MEMBERS CUMULATIVE



DROPPED CLUBS: 1

31 CLUBS OF 43 ADDED 1 OR MORE NEW MEMBERS

GENDER DISTRIBUTION	
MALE	667 (55.58%)
FEMALE	533 (44.42%)
Women Percentage Fiscal Year Goal: 44%	

DROPPED MEMBERS	
DECEASED	24
CLUB CANCELLED	13
OTHER	179
TOTAL	216

[CLICK HERE FOR CUMULATIVE MEMBERSHIP DATA](#)

TOTAL FAMILY UNIT MEMBERS	321
FAMILY MEMBERS PAYING HALF DUES	163